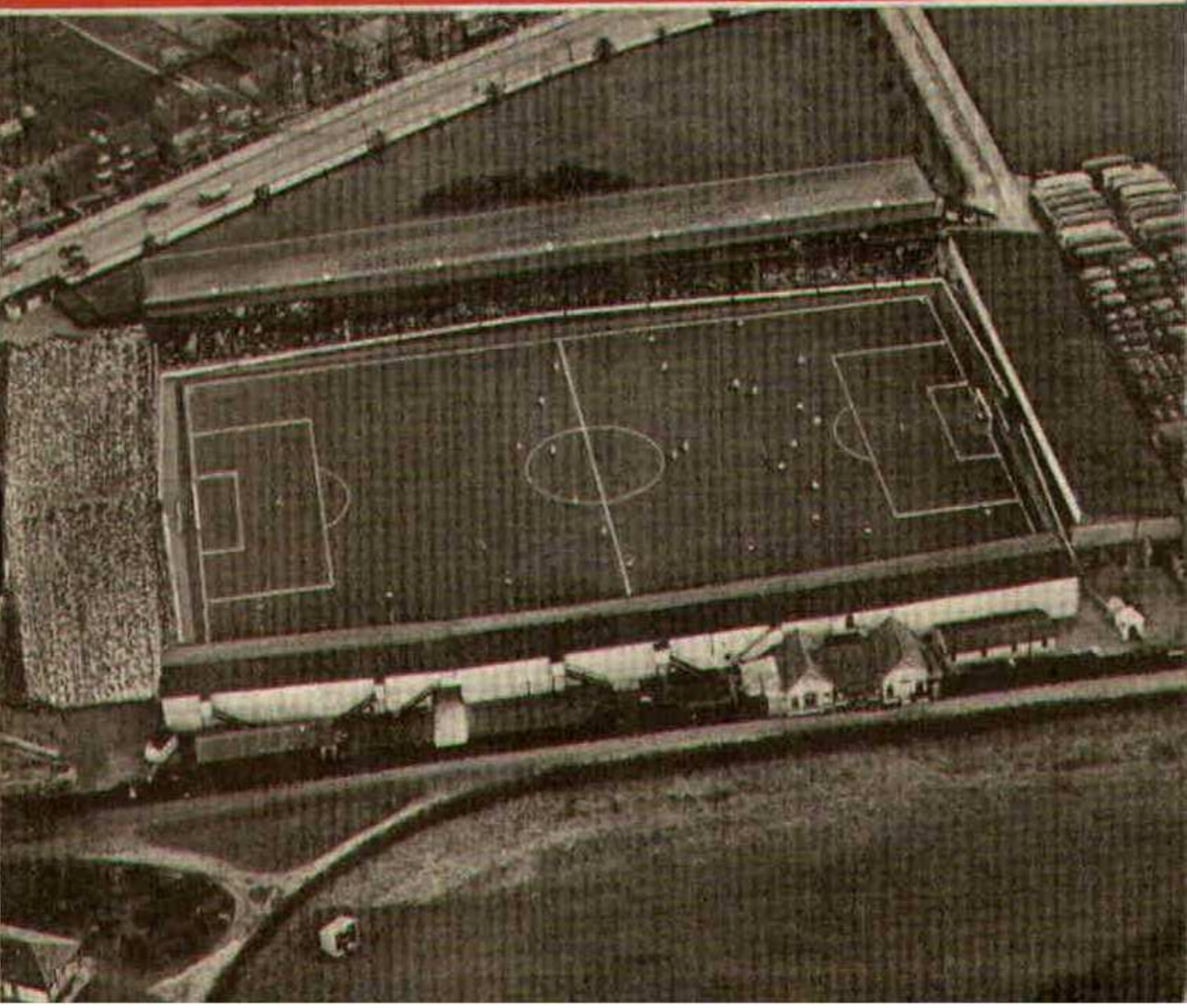


SWINDON TOWN



FOOTBALL CLUB

OFFICIAL PROGRAMME 6d.



FURNITURE AND FURNISHINGS
OF CHARM AND DISTINCTION



CARPETS - FLOORCOVERINGS
LOOSE COVERS - CURTAINS
SKILLED WORKSHOP REPAIR SERVICE
AND REMOVALS



Contractors to Government Departments, Hospitals
and Borough Councils

MILLS & MERRICKS LTD.

16-17 BRIDGE STREET, SWINDON

TELEPHONE 5365/6

TUESDAY, 21st AUGUST, 1962

Division III

SWINDON TOWN

4

v.

COVENTRY CITY

1

Kick-off 7.30 p.m.

REFEREE:

Mr. R. E. SMITH (Newport)

LINESMEN:

Red Flag - Mr. K. R. B. HALE (Bristol)

Yellow Flag - Mr. J. C. NICHOLAS (Chippenham)

for fine printing
you should have
a fine printer

BOROUGH PRESS (SWINDON) LTD

Maylott Studios

For **GROUP & SPORT** Photographs

Official Photographer to
Swindon Town Football Club

31 FARINGDON ROAD

TEL. 22792

NOTTON'S CAFE

COUNTY ROAD

200 yards from Ground

RIGHT ON THE BALL

C. DUNN & SON

BUILDERS & DECORATORS

Alterations, Renovations, Conversions
Plumbers & Sanitary Engineers

503 CRICKLADE ROAD

TEL. 22522

LEESE, ING & Co. Ltd.

Mineral Water and
Squash Manufacturers

Lansdown Rd., Swindon

Telephone 22744

"COAL"
"COAL"
"COAL"

J. WILMER

**ST. MARGARET'S ROAD
SWINDON**

Telephone 22535

L. Wollen

OFF LICENCE

WINES and SPIRITS

Arkell's Ales and Stout

373 Cricklade Rd., Swindon
Deliveries Daily Phone 3508

SWINDON TOWN FOOTBALL COMPANY LIMITED

Registered Office: COUNTY GROUND, SWINDON.

Directors:

Mr. W. J. CASTLE (Chairman)

Mr. H. E. LANE (Vice-Chairman)

Mr. B. T. HAMILTON (Hon. Treasurer)

Messrs. C. CHANDLER, J.P., J. DAVIES,

R. FRICKER, C. J. GREEN, F. PLYER, H. WILLIAMS and K. H. WILMER

Manager: B. J. HEAD

Secretary: R. A. MORSE

VOL. 13

TUESDAY, AUGUST 21st, 1962

No. 1

CLUB NOTES

Mention has often been made regarding improvement in the Official Programme. Today, on the occasion of our first home game, we introduce something quite new. The design and size are very different, and the actual contents much larger. Unfortunately, the production of a 32-page booklet costs considerably more, and it is with great regret that we have to increase the price to sixpence. We trust spectators will join with us in making the programme a really worthwhile effort. Please continue to purchase a copy, as we hope to improve on this the first issue.

A word of thanks to the gentleman who contributes so regularly, and so nobly, on behalf of the Supporters' Club. Our relations are most cordial, and he is very co-operative. We on the management side thoroughly enjoy and appreciate his articles. Thank you, sir!

The Club Notes give some idea of the Board's opinion (not necessarily the official one). The Supporters Club Notes indicate to some extent the views of that body. We would like to obtain the views of what we call "the man on the

WILSONS (SWINDON) LTD.

**BUILDERS OF MODERN ATTRACTIVE
HOUSES AND BUNGALOWS**

Enquiries to:

Head Office: 90 COMMERCIAL ROAD, SWINDON 6361

Site Office: COVENTRY FARM ESTATE, WROUGHTON 271

Site Office: QUEENSFIELD ESTATE, STRATTON S.M. 3405

The Rendezvous of all Sportsmen -

THE CROWN INN

(Host: Frank Plyer)

Arkell's Best Ales : Fully Licensed

Snacks, etc.

Stratton St. Margaret Tel. 2339

Always at your service

L. BIBBY

For all Types, Rags, Iron and Metal,
etc. Spot Cash Paid. Please Tel.
2101 and our van will call.

THE PADDOCK, ERMIN STREET
STRATTON ST. MARGARET

FISH

POTATOES

**T. QUALITY (Swindon)
LTD.**

Wholesale Merchants

COLLEGE STREET

TEL. 5446/7

For Best Quality Wet Fish

9 a.m. - 6 p.m. (except Mondays)

YORK ROAD FISHERIES

Frying Mid-day Tuesday, Thursday,
Friday and Saturday

Phone 3680

MARSHGATE GARAGE

MOTOR ENGINEERS :: ROOTES GROUP DEALERS

STRATTON ROAD - SWINDON - WILTS.

Tel. Swindon 22788

TWO MINUTES FROM GROUND

CLUB NOTES - continued

bank." If you have any ideas or suggestions, or would like to contribute something to the programme, please write to The Secretary, Swindon Town Football Club, County Ground, Swindon. We shall welcome all contributions.

These notes have to be written before the game at Barnsley. We trust the result has been a good one, although an away game in the far north is never easy. Our opening programme is rather strenuous, as out of our first six matches, four have to be played away from home, three of them in succession, at Coventry, Queen's Park Rangers, and Brighton.

Nevertheless we feel our young, fit side will fight every inch of the way. We wonder how many spectators remember the opening game in Season 1960-61, just two years ago. Can you recall the "Practice Match", when the young lads so severely trounced the older players (Higgins, Richardson, Marshall, Layne, Gauld, etc.) that it was decided to field a team of young and untried players? How we wondered on the result — should we do well or suffer a heavy defeat? You all know how the lads responded, and what stirring games ensued. The result of the first match was Swindon 1, Halifax 1. The team: Burton; Wollen, Trollope; Morgan, Owen, Woodruff; Summerbee, Hunt, Mellor, Jackson, Darcy.

Glance at today's team and you will realise why hopes are high. Most of those lads are still on the staff, with two seasons' experience behind them. We wish them well. We know they will always give of their best and play good football. Best of luck, lads! We send best wishes also to the manager, two trainers, and everyone connected with the running of the club, not forgetting the hard-working man in the background — the Secretary.

PANKHURST

The Palace - Gorse Hill - Swindon

MOTOR CYCLE - SCOOTER AND
THREE-WHEELER SPECIALISTS

Open Mon. to Sat. 9 a.m. - 8 p.m.

Phone 5466

Their kit is supplied by

SWINDON SPORTS CENTRE

WHO HAVE THE BEST SELECTION

Tel. 4270

114 COMMERCIAL ROAD

IVOR MESSENGER & SONS

High-Class Family Butchers

QUALITY WITH ECONOMY :: FAIREST PRICES IN TOWN

1 COLLEGE STREET, SWINDON

Tel. 5647

£10 TYPEWRITERS from £10

FULLY GUARANTEED

Also full selection new standard and portable typewriters
OFFICE EQUIPMENT

DOBELL SHEARMAN
& Co. Ltd.

26 High Street & 33 Faringdon Road, Swindon.

Tel. 4961/2

CLUB NOTES - continued

Last season at each home first team game, we ran what was known as "the Jackpot". Numbers were drawn for at half-time and the winners collected their prizes after the game. A pleasant, tidy little competition which produced almost £3,000, still remaining in the Development Fund.

It has now been decided to embark upon a much larger scheme. Tickets (1/- each) are sold by agents during the week, and also at matches. The draw is based on the number on the tickets, so please retain them to produce should you be a fortunate winner. The first prize of £100 is awarded every Saturday, and will be drawn at half-time each Saturday afternoon. £20 is also awarded for each weekday, and the lucky numbers are printed in the Swindon "Evening Advertiser", and the "Daily Sketch". Prize winners must bring their tickets when claiming any awards. We hope spectators will support this venture as they did the "Jackpot". It is hoped to obtain a worthwhile sum to add to the Development Fund, which is to improve the ground and its facilities.

Our visitors this evening provided the opposition for our second home game last season. The result after a stern struggle was 3-3. Teams: Swindon—Burton; Jones, Trollope; Morgan, Owen, Bell; Corbett, Hunt, E., Summerbee, Hunt, R., Darcy. Coventry City—Lightening; Kleutzenbauer, Austin; Nicholas, Curtis, Farmer; Grice, Myerscough, Dixon, Hewitt, Imlach.

Several persons have offered to defray the cost of the match ball used in our first team games. For the ball being used in tonight's match we are indebted to Mr. J. Bennett, of Sea View Holiday Camp, Wyke Regis, Weymouth.

SUPPORTERS' CLUB NOTES

In writing these notes for the first programme of the season, may we first offer our sincere good wishes to the Directors, Management and Players of the Town for a happy and successful season.

We remember writing similarly a year ago, and, although the opening of the season was disappointing, the team finished very strongly, and we hope that they will be able to carry on as they finished in May.

There seems likely to be great activity in our own Club. For several seasons past, the "three team" weekly competition has proved very profitable, but during the summer an alternative was inaugurated.

This proved very attractive and comparatively simple to operate. Its success may be judged by the fact that it recently proved possible to make a donation of £3000 to Swindon Town Football Club.

In view of this, it has been decided to continue with this Competition during the present football season, but with additional prizes.

For Quality FLOWERS - FRUIT - VEGETABLES
also FROZEN FOODS

CLARKE'S of Old Swindon

Proprietors: A. G. G. and J. A. W. HUNT

64 DEVIZES ROAD - SWINDON

Phone 22337

ORDERS DELIVERED

SEA VIEW CAMP

Camp Road, Wyke Regis, Weymouth. Tel 3351

Site overlooks Chesil Beach - Ideal for Camping Parties

Also Modern Caravans for Hire

Swindon Bacon Curing Co. Ltd.

Specialists in

BACON - PORK - COOKED HAM

50 FLEET STREET, SWINDON

Telephone 22122

Meet your friends for an enjoyable evening at

THE KINGSDOWN INN

(Host A. W. Vann)

FULLY LICENSED - ARKELL'S BEERS

SNACKS - Etc.

STRATTON ST. MARGARET

Tel. 3283

DIVISION III FIXTURE LIST

Date	Opponents	Ground	Result
August 18	BARNSELY	(A)	
21	COVENTRY CITY	(H)	
25	NORTHAMPTON TOWN	(H)	
28	COVENTRY CITY	(A)	
September 1	QUEEN'S PARK RANGERS	(A)	
4	BRIGHTON and HOVE ALBION	(A)	
8	HULL CITY	(H)	
11	BRIGHTON and HOVE ALBION	(H)	
15	CRYSTAL PALACE	(A)	
18	CARLISLE UNITED	(A)	
22	WREXHAM	(H)	
25	CARLISLE UNITED	(H)	
29	HALIFAX TOWN	(A)	
October 2	BRISTOL ROVERS	(H)	
6	WATFORD	(H)	
9	BRISTOL ROVERS	(A)	
13	BRISTOL CITY	(A)	
20	READING	(H)	
27	PORT VALE	(A)	
November 3	(1)		
10	MILLWALL	(A)	
17	SOUTHEND UNITED	(H)	
24	(2)		
December 1	NOTTS COUNTY	(H)	
8	BOURNEMOUTH and B.A.	(A)	
15	BARNSELY	(H)	
22	NORTHAMPTON TOWN	(A)	
26	BRADFORD	(A)	
29	BRADFORD	(H)	
1963			
January 5	(3) COLCHESTER UNITED	(A)	
12	QUEEN'S PARK RANGERS	(H)	
19	HULL CITY	(A)	
26	(4) SHREWSBURY TOWN	(H)	
February 2	CRYSTAL PALACE	(H)	
9	WREXHAM	(A)	
16	(5) HALIFAX TOWN	(H)	
23	WATFORD	(A)	
March 2	BRISTOL CITY	(H)	
8	(6) READING	(A)	
16	PORT VALE	(H)	
23	SHREWSBURY TOWN	(A)	
30	(S.F.) MILLWALL	(H)	
April 6	SOUTHEND UNITED	(A)	
12	PETERBOROUGH UNITED	(H)	
13	COLCHESTER UNITED	(H)	
15	PETERBOROUGH UNITED	(A)	
20	NOTTS COUNTY	(A)	
27	BOURNEMOUTH and B.A.	(H)	
May 4	(FINAL)		

SUPPORTERS' CLUB NOTES - continued

Most of our members are well acquainted now with the full procedure, but we shall be pleased to give further details to any who may be interested, either as prospective agents or as customers.

The Directors of Swindon Town Football Club are themselves operating a very similar Competition, and we heartily commend both to all supporters.

Membership of our own Club should now be renewed. This may be done at our Headquarters prior to any match or, if more convenient, through any Committee Member.

Our Annual General Meeting is to be held tomorrow, Wednesday, 22nd August, at 7.30 p.m. at our Headquarters, and we shall be pleased to see present any members who desire to know more of activities, to criticize the past or to furnish suggestions for the future.

**ADVERTISING SPACE
IN THIS PROGRAMME
TO LET**

Apply:-
SECRETARY,
SWINDON TOWN F.C.,
COUNTY GROUND, SWINDON

OUR VISITORS

J. F. AUSTIN (Left Back)

One of the Club's oldest serving members. He first joined in December 1948 as a boy and signed professional forms in July, 1950. A native of Stoke-on-Trent who is equally at home in the wing half position.

R. G. BASSETT (Outside Left)

Joined the Club last season as a junior from the Birmingham district, and is making rapid progress, having played in several Football Combination matches. A native of Birmingham.

T. BLY (Centre Forward)

Secured from Peterborough United on 6th July this year. A prolific goal scorer who has played with Norwich City for four years and Peterborough for two years. Born in Fincham.

H. BARR (Inside Right)

Transferred from Linfield on January 28th this year. He is a native of Ballymena and also has a reputation of being a good scorer.

D. J. BRUCK (Inside Forward)

Joined as an apprentice professional in September 1960. He turned full-time professional in April of this year. Born in Danzig he has made rapid progress in the wing half berth, having originally played as an inside forward.

M. CRUMP (Full Back)

A young Birmingham player, he came to Coventry as a forward. He has made rapid strides in the full back position since Mr. Jimmy Hill's transfer. Born in Birmingham, joined the Club as an apprentice professional in 1960 and signed professional forms in January of this year.

OUR VISITORS - continued

G. W. CURTIS (Centre Half)

Club Pivot and Captain who has been with the Club since 1955 having joined as an amateur, turned professional in May 1956. He is a native of Dover and was playing for Snow-down Colliery when seen by Coventry City.

A. DICKS (Centre Half)

Signed from Southend United on January 26th of this year. He played for Chelsea for six years and Southend for five years. A native of London, but only plays on special occasions and is Mr. Jimmy Hill's Assistant Manager.

R. DWIGHT (Inside Forward)

Signed last January from Gravesend, he has played for Fulham for seven years and Notts Forest for three years and he was a member of their Cup Final team sustaining a broken leg during that match. Born in Belvedere, Kent.

R. J. FARMER (Right Half)

A native of the Channel Isles, joined Coventry from Notts Forest in 1958 having played for them for five years. Equally at home in inside forward.

B. W. HILL (Wing Half)

A local player who was born in Bedworth and joined the club as an amateur in 1956 turning professional on 6th August 1958. Until recently he has played inside forward, but is fast developing into a most useful wing half.

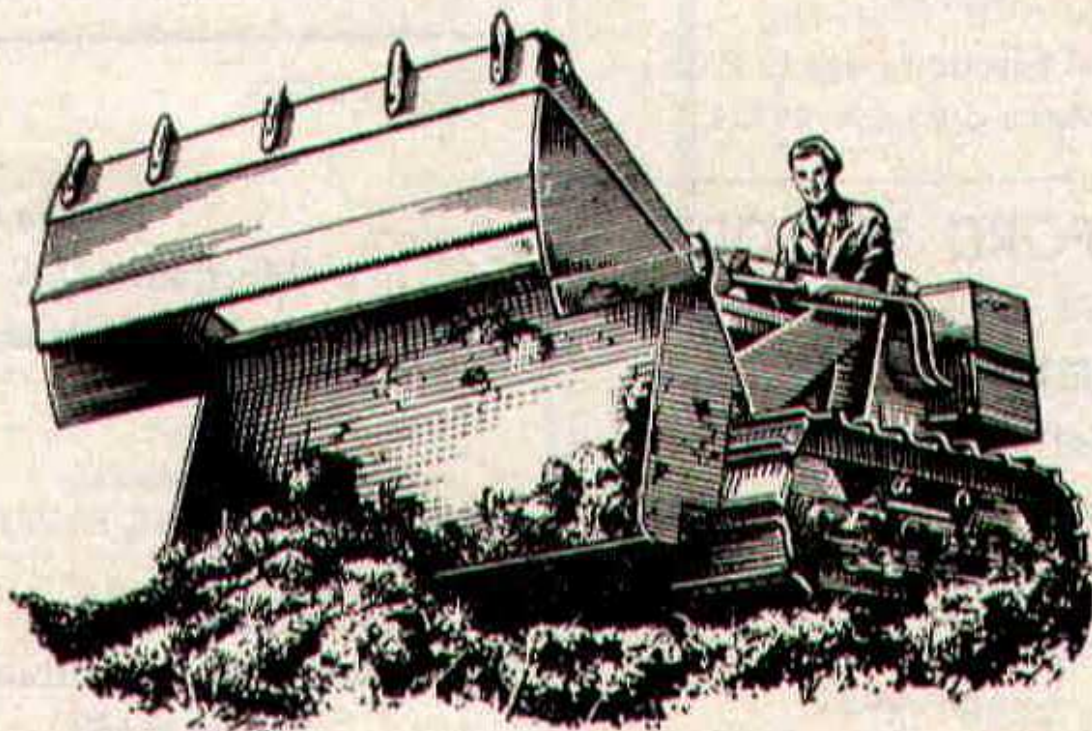
P. HILL (Inside Forward)

The Club's longest serving playing member. He joined from Rutland United in August 1948, now acting as the Club's Trainer.

H. HIBBERD LIMITED

40 NEWPORT STREET - SWINDON

PLANT HIRE



TRACTORS and SCRAPERS

BULLDOZERS

DROTT SHOVELS

J.C.B. and DINKUM DIGGERS

ROAD ROLLERS

TELEPHONE: SWINDON 6125

Hatton's Newsagency

A. J. D. Woodhouse and A. Smith

**Newsagents :: Tobacconists
Confectioners**

Agents for Wessex School of
Motoring

Main Booking Agents for Millers
Coaches

6 Regent Circus (near G.P.O.)

Telephone Swindon 22731

HULFORD MOTORS Ltd.

SELF DRIVE HIRE

Fleet of 1962 Fords
Populars - Anglias - Consuls

SHRIVENHAM ROAD

(200 yards from Football Ground)

Phone 4934

Large Car Park available

For High Class
Central Heating, Plumbing
Painting and Decorating
Electrical Installations
and Repairs

NORTH WILTS Sanitary & Heating Co. Ltd

NEWPORT ST., SWINDON

Phone 5373/4

WARNES (Swindon)

Electrical Contractors - Radio

Contractors to SWINDON TOWN

**160 COUNTY ROAD, SWINDON
9 SWINDON STREET, HIGHWORTH
7 CLIVE PARADE, SWINDON**

RIGHT WING

SWINDON

Turner

Wollen (2)

Morgan (4)

Owen (5)

Summerbee (7) Hunt (8)

Smith (9)

Swindon Colours:

RED SHIRTS, WHITE SHORTS



Laverick (11) Whitehouse (10) Bly (12)

Kearns (6)

Curtis (5)

Austin (3)

Lightening

LEFT WING

COVENTRY C

WARNES T.V.

TO BE SU

51 Commercial Road - Swindon

and Branch

(Swindon) LTD.

ers - Radio and Television
DON TOWN FOOTBALL CLUB

TH

PHONE 6346/7
PHONE 379
PHONE 6346/7

SWINDON
Turner

LEFT WING

Trollope (3)

owen (5)

Woodruff (6)

Smith (9)

Atkins (10)

Jackson (11)



These teams are subject
to alteration

) Bly (9)

Barr (8)

Humphries (7)

Curtis (5)

Farmer (4)

Sillett (2)

lightening

ENTRY CITY

RIGHT WING

T.V. RENTALS

BE SURE

- Swindon - Phone 6486

Branches

McILROYS

RESTAURANT

for morning coffee,
luncheon and
afternoon tea - in
pleasant surroundings -
you will find McIlroys
are top of the
'league'.

Full table service, best Beers
and Wines. Parties and
Functions catered for.

McIlroys Restaurant

64-72 Regent Street

Tel. 5294



COATE GARAGE

REPAIRS - OVERHAULS - WELDING
SERVICING - REBORING - TYRES

Props. E. V. & W. H. Mattick

Marlborough Rd., Swindon

Introducing . . .

OWEN DAWSON

Born at Hatfield, Herts, Owen played for Hampshire as a schoolboy. On leaving school he joined the ground-staff at Portsmouth.

He made good progress as a centre-half with the Club and as a result of some outstanding games he was selected as pivot for England Youth team. He played eight matches for the England Youth team. As a result of these games he was chosen as centre-half for the F.A. Amateur XI.

On his seventeenth birthday he was signed as a professional by Portsmouth and was a regular member of the Football Combination team which gained talent money by finishing in second position in the mid-week section last season.

Owen signed for Swindon on the 12th June, 1962 and we look forward to him becoming one of our outstanding players and a strong challenger for first team honours.

At 19 he has no real hobbies, football is his whole life.

HAVE YOU SIGNED ON YET

FOR
YOUR

SWINDON ECHO

4d.
WEEKLY

IF NOT THEN DO SO AT YOUR LOCAL NEWSAGENT
AND JOIN OUR GROWING TEAM OF READERS

For your pleasure try

RIVERSIDE LECHLADE LTD.

Tea Room and Gardens - Boating

4 Berth and 2 Berth Cabin Cruisers for hire, also Motor Boats,
Camping Punts, Rowing Boats, Canoes, etc. Parties catered for.
PRIVATE CAR PARK

Telephone: Lechlade 229

Little & Co. Ltd.

Try us for
Clothes for all
the family on
all occasions.

31-32 FLEET STREET
SWINDON

Tel. 22831

THE POPULAR MEN'S & LADIES'
COMPLETE OUTFITTERS

We have a
reputation for
Value & Service
that is second
to none

SEE THE LOVELY SELECTION OF
CHOCOLATES AND SWEETS
Greetings Cards a Speciality

CECIL GREEN

CONFECTIONER AND TOBACCONIST

13 VICTORIA ROAD

Telephone 4416

OUR VISITORS – continued

C. W. HOLDER (Centre Forward)

Recruited from Birmingham, joined the Club in 1960. He signed professional in May 1961. Born in Cheltenham.

W. M. HUMPHRIES (Outside Right)

A recent signing from Ireland. He joined the Club from Ards on the 27th of April this year. A native of Belfast who also had one season with Leeds United.

M. D. KEARNS (Left Half)

Recently demobbed from H.M. Forces. He joined the Club as a boy in 1955 from a local amateur Club and has played in representative matches for the army during his period of National Service. Born at nearby Nuneaton.

C. R. KLETZENBAUER (Full Back)

Born in Coventry, he joined the Club as an amateur in 1955 signing professional forms on the 29th February 1956. In spite of his unusual name he is a member of an old established Coventry family.

R. LAVERICK (Outside Left)

Another of Jimmy Hill's close season signings. He joined the Club from Brighton on June 29th of this year, began his career with Chelsea moving to Brighton via Everton.

A. D. LIGHTENING (Goalkeeper)

Signed on the same day as Farmer from Notts Forest in 1958. He is a native of Durban in South Africa. Regular first team goalkeeper since joining the club.

A. McCANN (Inside Forward)

Signed from Luton Town in August 1961. He was born in Maidenhead and Luton is his only other Club, having played for them for 2 years before joining Coventry.

**ADVERTISING SPACE
IN THIS PROGRAMME
TO LET**

Apply:-
SECRETARY,
SWINDON TOWN F.C.,
COUNTY GROUND, SWINDON

DIVISION III

HOW THEY FINISHED LAST SEASON

	P.	W.	L.	D.	F.	A.	Pts.
Portsmouth	46	27	8	11	87	47	65
Grimsby Town	46	28	12	6	80	56	62
Bournemouth	46	21	8	17	69	45	59
Queen's Park Rangers	46	24	11	11	111	73	59
Peterborough Utd.	46	26	14	6	107	82	58
Bristol City	46	23	15	8	94	72	54
Reading	46	22	15	9	77	66	53
Northampton Town	46	20	15	11	85	57	51
Swindon Town	46	17	14	15	78	71	49
Hull City	46	20	18	8	67	54	48
Bradford	46	20	19	7	80	78	47
Port Vale	46	17	18	11	65	58	45
Notts County	46	17	20	9	67	74	43
Coventry City	46	16	19	11	64	71	43
Crystal Palace	46	14	18	14	83	80	42
Southend United	46	13	17	16	57	69	42
Watford	46	14	19	13	63	74	41
Halifax Town	46	15	21	10	62	84	40
Shrewsbury T.	46	13	21	12	73	84	38
Barnsley	46	13	21	12	71	95	38
Torquay Utd.	46	15	25	6	76	100	36
Lincoln City	46	9	20	17	57	87	35
Brentford	46	13	25	8	53	93	34
Newport County	46	7	31	8	46	102	22

This space is reserved for

EDWIN H. BRADLEY & SONS LTD.

Builders - Swindon

This space is reserved

for

CIVIL DEFENCE

CIVIC OFFICES, SWINDON

This space is reserved

for

REG. WISE

OUR CATERER

OUR VISITORS - continued

E. MACHIN (Inside Forward)

Joined the Club from a local junior Club in March this year. He hails from Bolton in Lancashire.

R. R. REESE (Outside Right)

Signed on the recommendation of the Club's Welsh Scout from a junior Club in Wales. He signed apprentice professional forms in September 1960 and full professional forms in April of this year. Born at Ystradgynlais.

K. R. SATCHWELL (Centre Forward)

Another Birmingham-born player who joined the Club from a Birmingham Junior Team in 1958. A very fast moving goal scorer.

J. SILLETT (Right Back)

Signed from Chelsea last April. He is a native of Southampton and has been on Chelsea's books since 1953.

W. TODDS (Full Back)

Another local player who was born in nearby Bedworth. He joined the Club as an amateur and signed professional in 1960.

A. TURNER (Inside Forward)

Signed as a junior from his home district of Hull on 27th February 1962.

R. WESSON (Goalkeeper)

He has proved to be a most capable deputy to A. Lightening. He was born at Thornaby-on-Tees and joined the Club as a Junior in 1958.

J. WHITEHOUSE (Inside Left)

Secured from Reading during the close season, had two years experience with West Bromwich Albion and six years with Reading. Born at West Bromwich.

BRETTS PET AND GARDEN SUPPLIES

32-33 COMMERCIAL ROAD

and

6 CROMWELL STREET - SWINDON

When thinking of your new
T.V. - Radio - Washing Machine - Refrigerator
make your **GOAL**

HOLMES & LUCAS

14 REGENT STREET - SWINDON

Stockists of all leading makes

Telephone 22526-4721

FOR ALL YOUR ANGLING NEEDS
CONSULT

FRANK WOODWARD

Swindon's Fishing Tackle Specialist

25 HAVELOCK ST., SWINDON
PHONE 3879

For **Paints** of Good Quality

H. S. HODGES & SONS (SWINDON) LTD.

CRICKLADE RD. - SWINDON
PHONE 22422

Dulux, Brolac, Friary, Valspar,
Wallcharm, etc.

SOUTHERN LAUNDRY **Co. Ltd.**

Launderers and Dry Cleaners

STATION ROAD - SWINDON
TELEPHONE 4161

COMLEY'S

Modern Music Centre

26 HAVELOCK ST., SWINDON
RECORDS - MUSIC - INSTRUMENTS

Top Twenty 'Pops' always in stock
and wide selection of Jazz & Classics

Personal Supervision Phone 3874

FORTHCOMING MATCHES . . .

SATURDAY NEXT, AUGUST 25th, 1962

Division III

SWINDON TOWN

v.

NORTHAMPTON TOWN

Kick-off 3 p.m.

SATURDAY, SEPTEMBER 1st, 1962

Football Combination

SWINDON TOWN

v.

CHELSEA

Kick-off 3 p.m.

SATURDAY, SEPTEMBER 8th, 1962

Division III

SWINDON TOWN

v.

HULL CITY

Kick-off 3 p.m.

**SPECTATORS ARE
REQUESTED NOT TO
CROSS THE
PLAYING PITCH
AT THE END OF
THE GAME**

FOOTBALL COMBINATION

Fixtures and Results to date

Date	Opponents	Ground Result
August 18	SOUTHEND	(H)
21	MILLWALL	(A)
25	BOURNEMOUTH and B.A.	(A)
September 1	CHELSEA	(H)
3	WATFORD	(A)
18	QUEEN'S PARK RANGERS	(H)
26	SOUTHAMPTON	(A)
October 23	COVENTRY CITY	(H)
27	ALDERSHOT	(H)
November 7	LEYTON ORIENT	(A)
10	BRIGHTON	(H)
27	BRENTFORD	(H)
December 8	CHARLTON	(A)
11	FULHAM	(H)
19	PORTSMOUTH	(A)
22	BIRMINGHAM	(A)

1963

January 1	READING	(H)
9	READING	(A)
15	BOURNEMOUTH and B.A.	(H)
19	SOUTHEND	(A)
29	WATFORD	(H)
February 4	QUEEN'S PARK RANGERS	(A)
12	MILLWALL	(H)
23	CHELSEA	(A)
26	SOUTHAMPTON	(H)
March 6	COVENTRY CITY	(A)
9	ALDERSHOT	(A)
19	LEYTON ORIENT	(H)
23	BRIGHTON	(A)
April 6	BIRMINGHAM	(H)
9	BRENTFORD	(A)
16	CHARLTON	(H)
22	FULHAM	(A)
30	PORTSMOUTH	(H)

WILTSHIRE PREMIER LEAGUE

Fixtures and Results to date

Date	Opponents	Ground Result
August 18	RADSTOCK	(H)
22	PINEHURST	(A)
25	STONEHOUSE	(A)
29	PINEHURST	(H)
September 1	PURTON	(H)
8	CALNE	(A)
15	DEVIZES	(H)
19	FROME	(A)
22	TROWBRIDGE	(H)
29	FROME	(H)
October 6	WARMINSTER	(H)
13	PEASEDOWN	(A)
20	CLANDOWN	(H)
27	PAULTON	(A)
November 3	WESTBURY	(H)
10	MELKSHAM	(A)
24	CHIPPENHAM	(H)
December 1	WOOTTON BASSETT	(A)
8	SWINDON B.R.	(H)
15	STONEHOUSE	(H)
22	PURTON	(A)
29	CALNE	(H)

1963

January 5	DEVIZES	(A)
19	WARMINSTER	(A)
26	PEASEDOWN	(H)
February 2	CLANDOWN	(A)
9	PAULTON	(H)
16	WESTBURY	(A)
23	MELKSHAM	(H)
March 2	CHIPPENHAM TOWN	(A)
9	WOOTTON BASSETT	(H)
16	SWINDON B.R.	(A)
23	RADSTOCK	(A)
	TROWBRIDGE (to be arranged)	(A)

Have you purchased your ticket for the

**DEVELOPMENT
FUND
COMPETITION?**

TICKETS 1/- each

Draw at half-time today for

£100

other Prizes Monday to Friday

£20 EACH DAY

Results published daily in -

"Daily Sketch"

"Evening Advertiser" and

"Bristol Evening Post"

**ADVERTISING SPACE
IN THIS PROGRAMME
TO LET**

Apply:-
SECRETARY,
SWINDON TOWN F.C.,
COUNTY GROUND, SWINDON

FIFTY YEARS AGO

Just 50 years ago, with the commencement of Season 1912-13, the opening fixture for Swindon read:—

Southern League — September 5th

Coventry City v. Swindon Town

and the result was a 2—1 win for Coventry. The return fixture at Swindon that season was won by the Town 1-0.

Club details for Season 1912-13 were:— Secretary: S. Allen, 44 Kent Road, Swindon. Headquarters: Eagle Hotel, Swindon. Players:- Skiller and Hassell, goal; Kay, Walker and Woolford, backs; Tout, Silto, Lockhead, Chambers, Kennedy and Handley, half-backs; Jefferson, Fleming, Hicks, Wheatcroft, Bown, Bolland, Lamb, Batty, McCulloch and Burkinshaw, forwards.

Under the heading of English Cup the following entry appears in the records:-

The following clubs are excused the preliminary rounds of the competition:- Semi-finalists—Barnsley, West Bromwich Albion, Swindon and Blackburn Rovers.

STAND TICKETS

Tickets for seats in the Old and New Stands may be booked in advance. Postal applications should be accompanied by a remittance and stamped addressed envelope. Tickets ordered by telephone must be collected not later than 12 noon on the day of the match, otherwise they will not be reserved.

Prices for League Matches:-

New Stand: Block C-6/6 (Centre)

Blocks B and D-5/6 (Side Stands)

Blocks A and E-4/6 (Wing Stands)

Old Stand: Centre Box-8/-

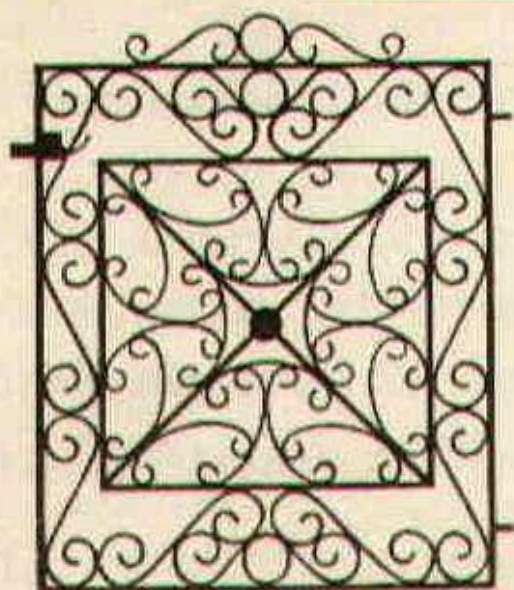
Block H-5/6 (Centre)

Blocks F, G and I-4/- (Side Stands)

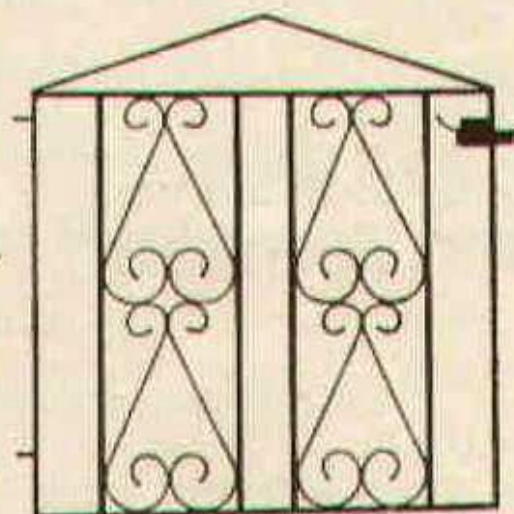
Postal applications to: Secretary, Swindon Town F.C., County Ground, Swindon, Wilts. Telephone Swindon 22118.



Gatemaster



T.G. 621



T.G. 626

Gates from 58/-
Singles and Doubles

If you live in the Swindon
area we will measure your
Gateway for you.

Our Decorative Ironwork
also includes:

FIRESCREENS
COFFEE TABLES
LAMPS
BRACKETS
CORNER TABLES
BALUSTRADES

SEND FOR FREE CATALOGUE
MARTYN LYNshaw LIMITED

20 Boundary Works, Stratton Road,
SWINDON. TEL. 4177